



REHOBOTH BEACH
FILM SOCIETY

Sept - Dec, 2011

REEL
NEWS



In This
Issue

Cover Page

Special Screenings

Page 2

Film Guidance System
On Screen / In Person

Page 3

Monthly Screenings

Page 4

Around the World
Thank you!

Page 5

Cinema & Art
Another Take

Page 6

Dates to Remember

Page 7

Film Festival Notes

Catch Festival Fever
Fundaiser

Purchase tickets now!
(See insert)



SPECIAL SCREENINGS

Windfall

Sat (Oct 22) 2:00 pm

Location: Upstairs Screening Room, Movies at Midway

Admission: \$4 RBFS member \$5 General public

Wind power, it's sustainable, burns no fossil fuels, reduces dependency on foreign oil, and produces no air pollution. These advantages are what the people of Meredith, New York considered when a wind developer suggested supplementing the rural farm town's failing economy with a farm of 40 industrial wind turbines. *Windfall* documents how this proposal divides Meredith's residents as they fight over the future of their community. With wind development in the United States growing annually at 39 percent, *Windfall* is an eye-opener that should be required viewing for anyone concerned about the environment and the future of renewable energy. [2010, USA, Runtime: 81 min, Not rated]

The Last Mountain

Sat (Oct 22) 7:00 pm

Location: Upstairs Screening Room, Movies at Midway

Admission: \$4 RBFS member \$5 General public

The mining and burning of coal is at the epicenter of America's struggle to balance its energy needs with environmental concerns. Nowhere is that concern greater than in Coal River Valley, West Virginia, where a small group of citizens are trying to stop Big Coal corporations from continuing the devastating practice of Mountain Top Removal. The citizens argue the practice of dynamiting the mountain's top off to mine the coal within pollutes the air and water, causing the deaths of their neighbors. Meanwhile, Big Coal reaps massive profits affording them enough influence in government to rewrite environmental protection laws, avoid lawsuits and eliminate more than 40,000 mining jobs, all while claiming to be a miner's best friend. Nonetheless, the belief that no individual or corporation owns the air and water and that it must be protected, drives the citizens and their supporters, like Robert F. Kennedy, Jr. to keep fighting.

A passionate and personal tale that honors the extraordinary power of ordinary Americans when they fight for what they believe in, *The Last Mountain* shines a light on America's energy needs and how those needs are being supplied. [2011, USA, Runtime: 95 min, Rated: PG]

Phone: 302.645.9095

Fax: 302.645.9460

www.rehobothfilm.com

FILM GUIDANCE SYSTEM

It is the practice of the Rehoboth Beach Film Society to program a selection of films that represents a moderate balance of diversity, genre, focal issues, and demographics. Many of these film have not been rated by the Motion Picture Association of America and may contain material not suitable for minors. In an effort to provide additional information for viewers, the RBFS created a guidance system used at the Rehoboth Beach Independent Film Festival. We decided to use this guidance system for films screened year-round, if applicable.

- L** may contain some offensive language **SC** may contain some sexual content
- LG** may contain lesbian/gay orientation **V** may contain some violence
- N** may contain some nudity



**ON SCREEN
IN PERSON**

The Rehoboth Beach Film Society is pleased to be selected by the Mid-Atlantic Arts Foundation to be a host site for the first year of the On Screen/In Person film touring program. The goal of this program is to bring the vision of some of the country's best independent filmmakers to a broad audience throughout the mid-Atlantic region, especially in communities with limited access to their work. On Screen/In Person will tour new independent, American films, including animation, documentaries, experimental, and narrative work accompanied by the filmmaker. This film is the second film of a 6-part series.

Little Town of Bethlehem

Sat (Oct 15) 7:00 pm
Saint Peter's Episcopal Church, 2nd & Market Street, Lewes
Admission: \$4 RBFS member \$5 General public



This documentary film follows the story of three men of three different faiths and their lives in Israel and Palestine. The story explores each man's choice of nonviolent action amidst a culture of overwhelming violence that has dehumanized all sides. Sami's story begins as a boy living in the Israeli-occupied West Bank; Yonatan's starts on an Israeli military base; and Ahmad's begins in a Palestinian refugee camp. For their work, Sami and Ahmad have been labeled as "Israeli collaborators" by some within the Palestinian community, and are seen as a threat to security by the Israeli military. By refusing to participate in offensive military actions against Palestinian civilians, Yonatan has been branded a traitor by some Israelis and can no longer work in his homeland. In spite of these challenges, all three men continue to embrace their common humanity and equality for all, daring to have the hope that peace in the Holy Land can be achieved through nonviolent struggle. [2010, USA, Runtime: 75 min, PG-13, in English and Arabic with English subtitles]

Following the screening, former State Department Officer David Shobe will moderate a discussion panel including President Dawood of the Islamic Center of Delmarva, Rabbi Susan Warshaw, and Jim Hanon, the film's director.

Director: Jim Hanon is the filmmaker and artist in residence of EGM Films. Hanon transitioned from a career in advertising to filmmaking as a natural expansion of his artistic abilities and because he felt stories are the most respectful and engaging way to explore emotional insight. Before committing to making a film he must find deeply personal meaning within the story.



MONTHLY SCREENINGS

Rehoboth Screenings: Upstairs Screening Room (Movies at Midway)

Ocean View Screenings: DiFebo's at Bear Trap Dunes, Ocean View

Admission: \$3 RBFS member
\$5 General public

In a Better World

Rehoboth: Fri (Sept 23) 7:00 pm
Ocean View: Thu (Sep 29) 7:00 pm

Winner of the Oscar® for Best Foreign Language Film, this film centers on Anton, a doctor who commutes between his home in an idyllic town in Denmark, and his work at an African refugee camp. In these two very different worlds, he and his family are faced with conflicts that lead them to difficult choices between revenge and forgiveness. Elias, Anton's ten-year-old son, is being bullied at school, until he is defended by Christian, a new boy who has just moved from London with his father. Christian's mother recently lost her battle with cancer, and Christian is greatly troubled by her death. Elias and Christian quickly form a strong bond, but when Christian involves Elias in a dangerous act of revenge with potentially tragic consequences, their friendship is tested and lives are put in danger. Ultimately, it is their parents who are left to help them come to terms with the complexity of human emotions, pain and empathy. [2010, Denmark & Sweden, Runtime: 119 min, Not rated, Danish & Swedish with English subtitles]



Potiche

Ocean View: Thu (Oct 27) 7:00 pm
Rehoboth: Fri (Oct 28) 7:00 pm

This year's Film Festival's Country Spotlight will feature France. *Potiche*, a French comedy is a preview look at French cinema, Set in 1977 in a provincial French town, *Potiche* is an adaptation of the 1970s comic play. Catherine Deneuve stars Suzanne Pujal, a housebound trophy wife, married to the chauvinistic owner of an umbrella factory. When the workers go on strike and take her husband hostage, she steps in to manage the factory. To everyone's surprise, Suzanne proves herself a competent and assertive woman of action, who leads the business to great success. However, trouble for Suzanne arrives when Maurice, her ex-lover, current town mayor and former union leader (Gerard Depardieu), tries to stir up more trouble at the factory.

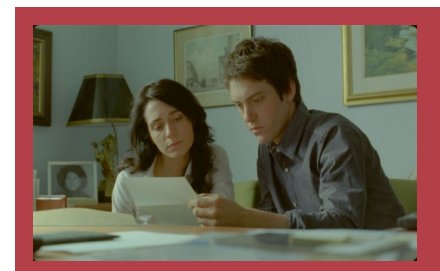
Acclaimed writer-director Francois Ozon, who previously directed Mrs. Deneuve in the international hit *8 Women*, twists the original play to create his own satirical take on the war between the sexes and the classes. [2010, France, Runtime: 103 min, Not rated, French with English subtitles]



Incendies

Rehoboth: Fri (Dec 30) 7:00 pm

When notary Lebel sits down with Jeanne and Simon Marwan to read them their mother Nawal's will, the twins are stunned to receive a pair of envelopes – one for the father they thought was dead and another for a brother they didn't know existed. In this enigmatic inheritance, Jeanne thinks she can find the key to Nawal's retreat into unexplained silence during the final weeks of her life. She immediately decides to go to the Middle East to dig into a family history of which she knows next to nothing. Simon is unmoved by their mother's posthumous mind games. However, the love he has for his sister is strong, and he soon joins her in combing their ancestral homeland in search of a Nawal who is very different from the mother they knew. With Lebel's help, the twins piece together the story of the woman who brought them into the world, discovering a tragic fate as well as the courage of an exceptional woman. [2010, Canada & France, Runtime: 130 min, Rated R, In French & Arabic with English subtitles]



AROUND THE WORLD

Admission: Free

Location: Upstairs Screening Room
Movies at Midway

The Colors of the Mountain

Wed (Oct 5) 7:00 pm



Young Manuel lives with his hard-working farmer parents in the remote, mountainous region of the Colombian countryside. While the local adults try to avoid both the armed military and the guerrilla rebels fighting each other in the area, Manuel and his friend Julián are obsessed with playing soccer any chance they get. When Manuel receives a new soccer ball for his birthday, the ball quickly becomes a part of everyday life and dreams of escape for the two boys. Disaster strikes when the new ball gets kicked off to a minefield. How far will the friends go to

recover this prized possession? [2010, Columbia, Runtime: 93 min, Not rated, Spanish with English subtitles]

The Human Resources Manager

Wed (Dec 7) 7:00 pm

The Human Resources Manager of Jerusalem's largest bakery is in trouble. He is separated from his wife, distanced from his daughter, and stuck in a job he hates. When one of his employees, a foreign worker, is killed in a suicide bombing, the bakery is accused of indifference, and the HR Manager is sent to the victim's hometown in Romania to make amends. Far from home, on a mission to honor a woman he didn't even know but has somehow grown to admire, the HR Manager fights to regain his company's reputation, and possibly his own humanity. [2010, Israel, Germany, France, Runtime: 103 min, Not rated, in Hebrew/ English/ Romanian with English subtitles]



[Around the World is presented in partnership with Lewes Library and Movies at Midway]

Thank you!



Throughout the year, many people donate their time, talents, and resources to assist the Film Society's efforts to promote the cinematic arts. In this issue, we say thank you to:

- ★ Wonderful summer interns **Maggie Gorman, Riley Raubacher, Erik Russel, and Kelly Sniffen**
- ★ **Bob Cloutier, Val Cloutier, Dick Contee, Rachel Cowart, Helen Gates, Pat Lewis, Ginger Livingston, Matt Marplo, Charlie Meyer, Sharon Miken, Connie Peterson, Riley Raubacher, Peggy Selph, Kelly Sniffen, Anne Marie Sopko, Scott Strickler, Lavonne Wontorek, and Tom Wontorek** for reviewing On Screen/In Person submissions.
- ★ **Sandra Chinchilla, Joanne Ciconte, Bob Cloutier, Alan O'Leary, Judy Palmer, George Palmer, Pat Romaine, Jill Stokes, Scott Strickler, and Tom Wontorek** for placing and filling rack card displays.
- ★ **Val Cloutier, Bob Cloutier, Lyda Dunham, Kay Loysen, Alan O'Leary, Jim Reichert, and Patty Reichert** for distributing flyers.
- ★ **Sue McCarthy, Scott Strickler, and Don Voth** for reviewing Another Take films.

[Cont'd on page 6]

CINEMA & ART

[Presented in partnership with Rehoboth Art League & INN at Canal Square]

Rebecca & Who Does She Think She Is?

Thu (Oct 6) 6:30 pm

Location: The INN at Canal Square (122 Market St., Lewes)

Tickets: \$15 (includes refreshments & film)

Seating is limited and reservations are required. Call RBFS at 645.9095, x1

Artists who happen to be mothers are the focus of these two films. Discover local mother and artist Rebecca Raubacher, in the short documentary, *Rebecca*. Directed by her daughter Riley Raubacher, the film provides an intimate glimpse into the local artist's life as she builds a career combining her love of art and horses. [2011, USA, Runtime: 6 min, Not rated]



The second documentary asks why in a changed world, women often feel they need to choose between mothering and working, their children's well-being and their own. *Who Does She Think She Is*, directed by Academy Award-winning filmmaker Pamela Tanner Boll, features five fierce women who refuse to choose. Through their lives, the film explores some of the most problematic choices female artists are forced to make - between mothering and creativity, partnering and independence, and economics and art. The film reminds the viewer that in ancient times, women were worshipped as cultural muses. Ironically in modern times, most people can't even name a handful of female artists. [2008, USA, Runtime: 73min, Not rated]

Following the screenings, Rebecca Raubacher, Anita Peghini-Raber, and Kim Klabe, will discuss their experiences juggling motherhood and a career as an artist with the audience.

ANOTHER TAKE

(Co-sponsored with CAMP Rehoboth)

Location: Upstairs, Movies at Midway

Tickets: \$7

Bloomington

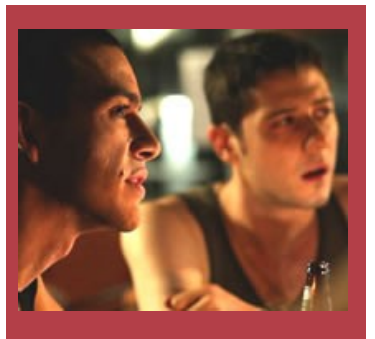
Sat (Sep 24) 2:00 pm

Jackie Kirk, a 22 year-old ex-television child actress arrives in the mid-west all the way from California, ready to explore her new sense of independence. Her greatest wish is to blend in with her peers, which proves to be difficult given her celebrity status. During a psychology department mixer, Jackie meets Catherine Stark, a mysterious teacher in her early thirties with an infamous "lady-killer" reputation. In spite of warnings she received from other students, Jackie falls for Catherine's charm and the two outsiders begin an intense relationship. When Jackie is given the opportunity to return to the ultra-competitive world of show business in the middle of the school year, she decides to accept the challenge. However, what Jackie fails to anticipate is the potentially disastrous effect her decision might have on her relationship with Catherine, her first true love. [2010, USA, Runtime: 83 min, Not rated]

Private Romeo

Sun (Sep 25) 2:00 pm

When eight cadets are left behind from a training exercise, love and trouble abound at McKinley Academy in *Private Romeo*, a suspenseful and sensual retelling of a classic tale, starring Seth Numrich and Matt Doyle (both from the Tony Award Winning *War Horse*). The story begins in the classroom with the cadets reading Shakespeare's *Romeo and Juliet*, but the storyline escapes the confines of the classroom and the boys begin to live out the drama. The play takes on new meaning as Juliet and his Romeo follow their hearts, oblivious to the sidelong glances and smirks of their fellow soldiers. From the star-crossed lovers' first kiss, to the infamous feud between the two houses, all of these handsome cadets are pulled into the turmoil of forbidden love. [2011, USA, Runtime: 101 min, Not Rated]



DATES TO REMEMBER

Fri	Sep 23	(7:00 pm)	Monthly Screening: <i>In A Better World</i> (upstairs, Movies at Midway)
Thu	Sep 29	(7:00 pm)	Monthly Screening: <i>In A Better World</i> (DiFebo's, Bear Trap Dunes)
Sat	Sep 24	(2:00 pm)	Another Take: <i>Bloomington</i> (upstairs, Movies at Midway)
Sun	Sep 25	(2:00 pm)	Another Take: <i>Private Romeo</i> (upstairs, Movies at Midway)
Sat	Oct 1	(5 - 7:00 pm)	Catch Festival Fever (Bernstein home)
Wed	Oct 5	(7:00 pm)	Around the World: <i>The Colors of the Mountain</i> (upstairs, Movies at Midway)
Thu	Oct 6	(6:30 pm)	Cinema & Art: Rebecca & Who Does She Think She Is? (Inn at Canal Square)
Sat	Oct 15	(7:00 pm)	On Screen/In Person: <i>Little Town of Bethlehem</i> (St. Peter's Episcopal Church)
Sat	Oct 22	(2:00 pm)	Special Event – Wind Power: <i>Windfall</i> (upstairs, Movies at Midway)
Sat	Oct 22	(7:00 pm)	Special Event – Wind Power: <i>The Last Mountain</i> (upstairs, Movies at Midway)
Thu	Oct 27	(7:00 pm)	Monthly Screening: <i>Potiche</i> (DiFebo's, Bear Trap Dunes)
Fri	Oct 28	(7:00 pm)	Monthly Screening: <i>Potiche</i> (upstairs, Movies at Midway)
Wed – Sun	Nov 9 -13		Rehoboth Beach Independent Film Festival (Movies at Midway)
Wed	Dec 7	(7:00 pm)	Around the World: <i>The Human Resources Manager</i> (upstairs, Movies at Midway)
Fri	Dec 30	(7:00 pm)	Monthly Screening: <i>Incendies</i> (upstairs, Movies at Midway)

Thank you! (cont'd)

- ★ **Kevin Crown** for designing the new format of *Reel News*
- ★ **Ed Harner, Pat Lewis, and Neal Tash** for assisting with office work.
- ★ **Craig Fraser** for leading the DE Efficiency Plus Program and other facility projects.
- ★ **Ron Dotterer, Lois Gillespie, Myra Kramer, Kay Loysen, Pat Shurman, Jill Stokes, and Monica Viana** for preparing the April newsletter for mailing.
- ★ **Sonja Decker** for donating clothes to be used as costumes in the Fun with Filmmaking summer program.
- ★ **Judy Michelson** for the donation of LED flashlights.
- ★ **Connie Costigan** for hanging our collection of Festival posters in a way only an artist could do!

Notes & News.....

- ★ Congratulations to Pat Lewis, September's Volunteer in the Spotlight: Reel People
- ★ Congratulations Dave Stabile whose estimate for total hours of volunteer service in twelve months (at the Volunteer Appreciation Party) earned him a complimentary individual Associate Producer membership.

Rehoboth Beach Independent FilmFESTIVAL

IMPORTANT DATES:

- Festival programs are scheduled to be mailed the first week in October
- Pre-Festival ticket sales will take place Oct 24 - Nov 4 (9:30 am - 4:30 pm)
- Locals' Night ticket sales will take place Oct 31 - Nov 4 (9:30 am - 4:30 pm)

FESTIVAL HIGHLIGHTS:

- **Veterans' Tribute on 11/11/11 at 11:11 am in the Big Tent** - Bring your singing voice!
- This year's **Country Spotlight will feature France**. Include in your Festival schedule some of the special French activities that will take place in the Big Tent
- **Bargains!** Once again in recognition of a challenging economy, membership dues and ticket prices remain the same. We ask every member to refrain from purchasing tickets for multiple friends. If your friends love the Festival, please encourage them to become a member.

CHANGES:

- **Tickets for Audience Favorites** will only be available for purchase when the film is announced. This process allows the flexibility to screen more popular films, (i.e. two films in two theaters as opposed one film in two theaters)
- **Associate Producer members** (only) will be able to purchase tickets for the entire Festival beginning at **12:30 pm** on Wed (Nov 9) in the Big Tent. (Eligible members who did not place a ticket order during the pre-Festival ticket sales period will also be able to purchase tickets at this time.)
- **Film Buffs and student members** will be able to purchase tickets for Wednesday films beginning at 2:30 pm at the Big Tent.

ASSISTANCE NEEDED:

- There are over 500 volunteer shifts during the Festival that need to be filled. If you know where and when you want to work, please call Wendi at 645.9095, x2. Encourage your friends and family members to help out. The more volunteers the merrier!
- **Introducers to film screenings needed!** If you can read under less than best lighting, are able to project your voice loudly, and would like to introduce a film, please contact Joe Bilancio at joe@rehobothfilm.com
- There are plenty of tasks to do before the Festival. If you have time available in September and/or October, please call Wendi at 645.9095, x2. We have a job for you!

NONPROFIT ORGANIZATION
US POSTAGE PAID
REHOBOTH BEACH, DE
PERMIT NO. 9

Rehoboth Beach Film Society
107 Truitt Ave.
Rehoboth Beach, DE 19971

Phone: 302.645.9095
Fax: 302.645.9460
www.rehobothfilm.com

The mission of the Rehoboth Beach Film Society is to promote the art of film and, through outreach initiatives, to entertain, educate, and enrich the cultural life of local and extended communities.

RBFS programs are made possible, in part, by a grant from the Delaware Division of the Arts, a state agency dedicated to nurturing and supporting the arts in Delaware, in partnership with the National Endowment for the Arts.



THIS & THAT..

RBFS WISH LIST

- ◆ The following materials to make costumes: lab coat, old fishing rod, fishing accessories including hat, Jester hat, Knight's helmet or shield, masks, noses, mustaches
- ◆ As a 501(c)(3) organization, donations to the Film Society are tax deductible. Pick-up can be arranged by calling 302.645.9095, ext. 2

FILM LIBRARY HOURS

Monday and Friday, 10:00 am - 3:00 pm

NOVEMBER 9 - 13, 2011

Rehoboth Beach Independent Film Festival



YOU'RE INVITED



Catch Festival Fever!
A Night of Film, Fun and Fundraising



Be First!

Snap up your Festival film package and join us for a fun evening of Festival film previews; get the inside scoop from Program Director, Joe Bilancio.

Bid on gifts at the Silent Auction (items include Festival benefits) **Enjoy beverages and delicious nibbles from Nourish!** Help the Film Society raise funds to produce the Festival and year-round programming.

Saturday, October 1, 2011

5:00 pm to 7:00 pm

At the home of Sharon and Jeff Bernstein

3 Cardiff Road

Rehoboth Beach Yacht & Country Club

For map and reservations visit:

www.rehobothfilm.com

click on the *Catch Festival Fever* link

OR call 302.645.9095 ext 1

\$75 per person

Please RSVP by Sep 26

